

# Local Wildlife News



April - September 2010

A news and events  
diary from wildlife and  
conservation groups in  
the Ipswich area

Over 80 local events: wildlife walks,  
talks and work parties

Local reptiles in focus  
- see inside cover

© Matt Berry



# Local reptiles in focus

Both snakes and lizards are in the Ipswich area and some can be found in gardens, if you know where to look:

- Both viviparous lizards and slow-worms prefer heathland, sandy soil, long dry grass areas and bracken.
- Viviparous lizards will bask on heaps of rubble and rockeries, darting into cover when disturbed.
- Slow-worms spend a lot of their time hidden in warm crevices, and will usually stay still if uncovered.
- Grass snakes prefer thicker grass and wet areas. They will quickly move away if disturbed, leaving you with only a glimpse of their tail. They are good swimmers and will often hunt in water.
- Slow-worms, viviparous lizards and occasionally even grass snakes will warm up beneath black polythene or old carpets used for mulching vegetable plots and allotments.
- Slow-worms and grass snakes can be found in compost heaps – and grass snakes will lay their eggs in them in midsummer to hatch in the autumn.
- Adders can be found in a few areas of heathland near Martlesham, but are extremely rare in the Ipswich area. They occur more commonly elsewhere in Suffolk.

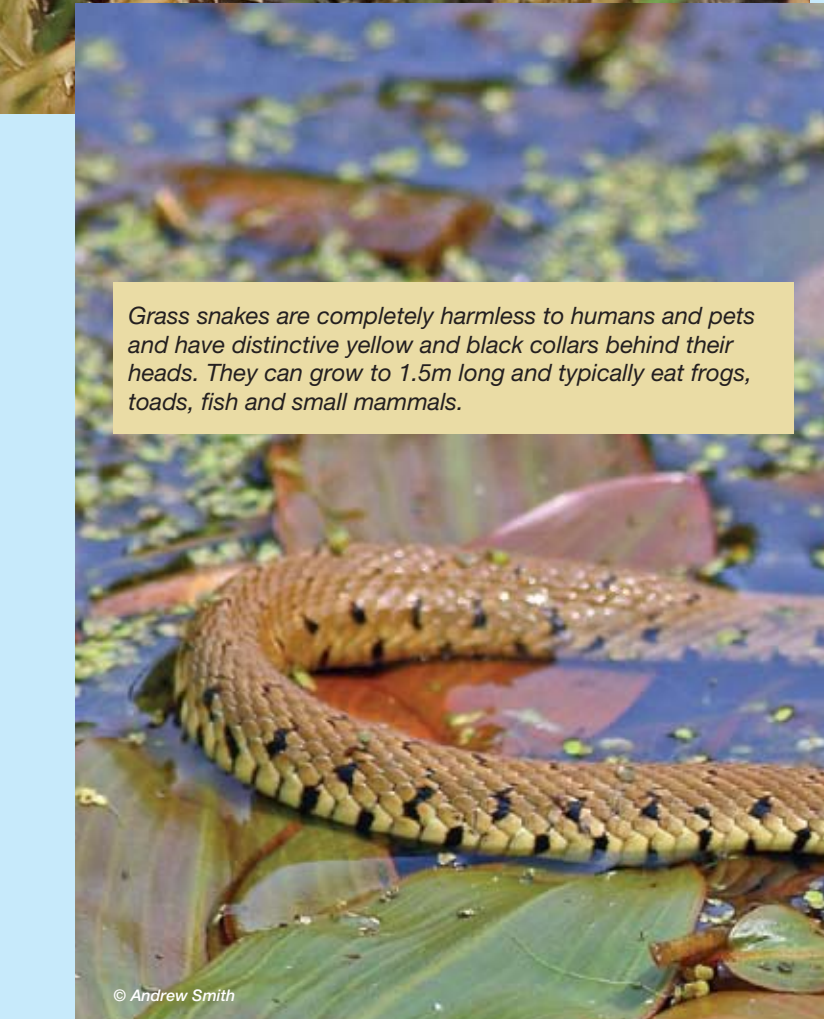
Both snakes and lizards hibernate during the winter and will be active between March and October. The young hatch from their eggs and are born in the autumn.

Any of these features may attract reptiles to your garden: south-facing banks; compost, woodchip or grass cutting heaps; long grass; rockeries or piles of rubble; woodpiles and – for grass snakes - ponds. If you find any reptile, keep still and take a good look so that you can identify it, but don't try to touch or catch it. It is illegal to kill or injure any native reptiles in the UK. For more information visit Amphibian and Reptile Conservation at <http://www.arc-trust.org/>



*Adders have a zig-zag or diamond pattern on their backs and seldom reach more than 65cm in length. They are extremely timid and seldom bite unless they cannot escape.*

© Dave Fincham



*Grass snakes are completely harmless to humans and pets and have distinctive yellow and black collars behind their heads. They can grow to 1.5m long and typically eat frogs, toads, fish and small mammals.*

© Andrew Smith



*Slow-worms are actually legless lizards – unlike true snakes they have eyelids and can blink. They can reach 40cm in length and are usually golden brown in colour, with the females having darker sides. Their diet is mostly slugs and worms.*

© Dave Fincham



*Common or viviparous lizards grow to around 15cm long and are very fast moving. Their diet is mainly insects.*

© Matt Berry



Local Wildlife News produced by Greenways Countryside Project.

# Welcome

Welcome to the third edition of Local Wildlife News. This newsletter and programme of events and activities has been brought together by the Greenways Project along with key conservation partners in the area. The magazine allows existing groups, and hopefully more in the future, to produce their own 'group pages' - thus passing relevant information to a far wider, but targeted, audience.

Local Wildlife News is likely to continue to evolve over the next few editions, so please bear with us – and most importantly, do let us know what you think – we would love to hear of any ideas and suggestions that might increase usefulness or enjoyment of LWN.

Apart from each local group having its own pages, and the main diary of events, we would very much like to receive news and articles from you – whether a simple sighting of an interesting species, or a complete report on a local wildlife site – or anything else?

## Mailing lists – Please note

We are aware that some who are members of several conservation organisations may well receive more than one copy of the newsletter. We are very sorry if this is the case, and would be very grateful if you could pass on the spare copy to someone who will appreciate it and contact the Greenways Project on 01473 433995 or [greenways.project@ipswich.gov.uk](mailto:greenways.project@ipswich.gov.uk), stating which organisations you are a member of, so that we can ensure that you receive just one in the future (hopefully!).

## STOP PRESS

The Greenways Project and CSV Media have been successful in their bid for grant funding to “Access To Nature”, a Big Lottery funded programme run by Natural England. The grant, totalling in excess of £350,000 will fund two new members of staff to recruit, train and supervise new volunteers from parts of the local community that do not traditionally get involved in the management of their local environment. The new staff will work alongside existing staff at both CSV and Greenways, and will help deliver an ambitious programme of on-site improvements to some of our nature reserves and green spaces in Ipswich. More detail will be supplied in future editions of LWN.

## Contents

	Page
Suffolk Wildlife Trust	4 - 7
Ipswich Wildlife Group	8
IBC Wildlife and Education Rangers	9
Greenways Countryside Project	10 - 13
Friends of Christchurch Park	14
Friends of Holywells Park	14
Portal Woodlands Conservation Group	15
Suffolk Ornithologists' Group	15
Friends of Belstead Brook Park	16
Tribute to Steve Thorpe	16
RSPB Ipswich Local Group	17-19
Local Wildlife News Snippets	19
Events Diary	20-24

## Spring Wood Celebration

Monday May 3rd - 11:00am – 3:00pm

Bring the family and enjoy the day celebrating and exploring this wonderful ancient woodland on Ipswich's doorstep.

**Woodland Crafts and Toys ~ Horse Logging ~ Morris Dancers ~ Bluebell Walks ~ Minibeast Safaris ~ and much more...**

Bring a picnic and stay all day!

**For more details contact the Greenways Project on 01473 433995 or email [greenways.project@ipswich.gov.uk](mailto:greenways.project@ipswich.gov.uk)**



Chairman:	David Munday	01473 217310	davidmun@talktalk.net
Secretary:	Wendy Brown	01473 259674	chriswendy@talktalk.net
Treasurer:	Tony Clarke	01473 741083	tonyclarke2@sky.com
Newsletter Editor:	John Ireland	01473 723179	john.ireland49@googlemail.com

*We are the Ipswich Local Group of the Suffolk Wildlife Trust and we offer an interesting range of monthly meetings with guest speakers which usually take place on the third Wednesday of the month at 7.30 pm in the hall of St Margaret's Primary School, Bolton Lane, Ipswich. Trust members and non-members are equally welcome. During the summer months we offer a variety of trips, some local, others by coach. Details of these and our monthly meetings can be found in our "Diary" section which follows. New members are always welcome.*

## Chairman's Letter

### Local Wildlife News

I am pleased to say that most people's reaction to the new "Local Wildlife News" was very positive. Various comments and production alterations have led to one or two minor changes and hopefully improvements with this edition. As ever your feedback to the production team via me or our editor John Ireland, would be much appreciated.

### Meetings

By the time you read this you will have been to South Africa, been up and down the coast of East Anglia, studied the birds in your garden or even found out how you can help to create a Living Landscape! In other words you have come along to our Winter meetings and it is thanks once again to Pam Ireland who works very hard to provide us with these wide-ranging and interesting speakers. As usual I would ask you for feedback if you have heard a good speaker that you could recommend for our meetings.

### Christmas

For the three meetings prior to Christmas we were offering copies of Simone Bullion's new book 'The Mammals of Suffolk' and SWT Christmas cards for sale, and I am delighted to tell you that we made £272 for the Trust from these sales. So a big thank you to members who helped manage the sales and to all those who generously made purchases.

### "Springwatch" coming to Ipswich?

Yes! In partnership with the IBC Wildlife Rangers, we are talking with the BBC who want us to have "Wild Days Out" to help them promote the International Year of Biodiversity. Sat. 5th June has been earmarked for an event and the proposal is to base activities at Orwell Country Park with experts and volunteers carrying out habitat surveys of everything from bugs to bats! Other interesting events and displays for anybody to enjoy will be arranged. Any help with the surveying would be appreciated, and who knows you might even meet a Springwatch star! Watch out in the local media and at the SWT web site for confirmation and more details. [www.suffolkwildlifetrust.org](http://www.suffolkwildlifetrust.org)

DAVE MUNDAY

## Recording Nature's Voices

by Malcolm Clark

My first sound recordings of birds were made in the late 1960s, when we lived in north west Norfolk. I took a borrowed portable tape-recorder with me when I went with a photographer friend to a heronry near King's Lynn. Coincidentally it was at that time that the Wildlife Sound Recording Society was formed. I joined and the rest, as they say, is history; it has been my passion (obsession some say) ever since.

For more than 40 years I have recorded all kinds of natural sounds; mainly from birds, but also from mammals, amphibians, insects as well as wind and water. My recorded library is now archived on more than 50 CDs comprising over 1400 tracks which include material collected on holidays abroad, native British species, animals in captivity as well as those which are wild and free.

In the mid 1920s Ludwig Koch pioneered the sound recording of bird song onto wax discs which ran for about 3 minutes at 78 rpm. Today we can record onto digital memory cards which allow several hours recording time. Just think! Ludwig Koch made his recordings in the back of a van equipped with solid spirit-levelled turntables onto discs kept in ovens to keep them warm and soft, from microphones sited at the end of cables many metres long, whereas I record on a lightweight recorder from a hand-held microphone wearing headphones, following the sound wherever it takes me, and all weighing a few ounces. On occasion it is preferable to mount the mic on a tripod if a long wait

is anticipated, and to take a shooting-stick to take the weight off one's feet, and I have even made recordings whilst lying in bed. Sometimes I do use miniature microphones at the end of long leads to a fixed point, say a bird's nest, and when dear Margaret Grimwade and I were engaged in our project to record the voice of the badger, microphones were semi-permanently installed in the sett.

Of the more than 200 bird species for which I have recordings the one for which I have most tracks is the Great Tit (*Parus major*). There are over 50. I collect as many examples of great tit song as I can from as many diverse locations as I am able to visit. This is because great tit song is simple in structure and it is easy to discern the wide variety of individual songs the bird is capable of. My record (pardon the pun) is five variations from one bird in one sequence of singing. It is surprising how many ways the great tit can sing "teacher teacher". Of course, all bird species enjoy individual repertoires, but they are not so readily heard, say in blackcap or robin, as they are in reed bunting or willow warbler or other such "simple" songsters.

And here's the thing. After 40 years and who knows how many hours spent recording, there are still surprises in store. For me the sense of excitement and adventure is as fresh as ever with each returning Spring.

If anyone would like more information about this absorbing hobby I will be very happy to help.



## Natural History Museum & Chelsea Physic Garden

Sunday 11th July 2010

For this year's annual coach outing we shall be visiting two scientific gems in the centre of London.

In the morning we shall visit the Natural History Museum, in particular the new Darwin Centre, constructed to celebrate the bicentenary of this famous man. This is a real state-of-the-art development with amazing displays and exhibits. The Climate Change Wall with touch screens shows how scientists can predict future changes. In the Attenborough Studio one can listen to informal talks, see short films, or sometimes there's a chance to handle live specimens or talk to research scientists. In the UK Biodiversity Centre there is information on all aspects of our native Flora and Fauna, and you can bring along any specimen you may want to have identified. You can wind your way through the Cocoon passing incredible specimens and exciting activities and may see scientists at work using the latest in scientific equipment. All this is of course in addition to the displays which many of you will have seen on previous visits.

There is a good café for a meal or snack, and also a place where one can eat one's own picnic.

In the afternoon we shall proceed to the Chelsea Physic Garden a short distance away on the bank of the Thames. It was founded in this spot in 1673 as the Apothecaries' Garden, training apprentices to grow and identify plants for medicinal use. It has what is thought to be the oldest man-made rock garden in Europe and



*The Darwin Centre*

has the oldest glass houses in Britain. In 1712 Dr Sloane (of Sloane Square) bought all the land around Chelsea and agreed to rent out the garden in perpetuity for £5 a year. This sum is still paid annually to Dr Sloane's heirs. Chelsea Physic Garden has been a centre for leading botanists through the ages. It was visited several times by Linnaeus in the 1700s and has been growing and exchanging plants and seeds with all regions of the world. Today it is a centre for education, conservation and scientific research with links to Kew, The Natural History Museum and the Eden Project. It is also a really lovely garden, with areas devoted to medicinal plants and others of commercial value. I have booked guides to convey us around the garden, and warned the café that tea and cakes will be needed by most people at the end of the day (own cost)! This Garden is closed on Saturdays.

The charge includes Coach, Entrance, and the Guided Tour of the Physic Garden.

---

### Coach outing to Natural History Museum and Chelsea Physic Garden Sunday 11th July 2010

Please reserve ..... places at £27

Total enclosed £ .....

Name .....

Address .....

..... Post Code .....

Telephone .....

Please return this form together with a SAE and cheque made out to SWT

To Pam Ireland, 49, Mayfield Road, Ipswich. IP4 3NG

Enquiries Tel. 01473 723179

## Summer Events 2010

### **Sunday May 2nd 4.30am Dawn Chorus at Alton Water with the Shotley SWT Group**

If you have never been on a Shotley Group Dawn Chorus, this is an event to experience. The walk is led by a number of expert birders and is followed by a sumptuous breakfast at the Ewarts' house. Numbers are limited at this popular event, so booking is essential. If you wish to go please contact Mike Ewart (01473) 328281 for full details.

[www.altonwildlife.co.uk](http://www.altonwildlife.co.uk)

### **Saturday May 15th 10.30am Guided Walk in Broaks Wood, led by Simon Leatherdale**

Broaks Wood is a Forestry Commission site, covering 62 acres, with beautiful walks and a vast range of habitats. Most of it is Ancient Woodland, probably existing as woodland since the end of the last ice-age 12,000 years ago. It therefore has a rich flora and fauna, including 200 species of wild flowers and 25 species of butterflies. Our guide is Simon Leatherdale, who spoke to our group last September. Broaks Wood is 3 miles NW of Halstead on the A1017 Grid Ref, TL 784 316. Donation £3 for SWT and Tree Aid

No need to book. For more information contact Pam Ireland (01473)723179

### **Saturday June 5th 10.00am Guided walk at Sizewell Belts, led by Carl Powell**

Cared for by the SWT for British Energy these lovely grazing marshes, in June, will be a carpet of wild flowers, many of them orchids. There are many species of dragonflies and damselflies, many birds including warblers, kingfishers and barn owls may be seen, while otters and water vole inhabit the area. Carl's walk will last for about 2½ hours, and stout shoes or boots are advisable. The site is about 1 km NNE of Leiston (Grid Ref 454 638). We shall meet in the car park there at 10.00am. Donation £3. No need to book.

For more information contact Pam Ireland (01473)723179

### **Sunday July 11th 8.30am Coach Outing to the Natural History Museum and Chelsea Physic Garden**

Morning spent in the Natural History Museum where the new Darwin Centre Extension has recently opened, and afternoon at the Chelsea Physic Garden where we shall have a guided tour to see medicinal and rare plants. See details and booking form on the previous page.

Meet Crown Street Lay-by 8.30am. Cost approx £27. Booking Essential.

Contact Pam Ireland (01473) 723179

### **Saturday August 7th 2.30pm Visit to Suffolk Horse Centre with Nigel Oakley**

This is a great opportunity to visit Rede Hall Farm where Nigel (who spoke to us in December) keeps his Suffolk Punches. There may be a chance to see them in harness and pulling a plough and hopefully there will be a foal (due at the end of February). Rede Hall Farm is situated on the A 143, about 8 miles SW of Bury St Edmunds. Follow the signs to Ickworth and keep straight on. Grid Ref. TL 804 576

No need to book. Donation £3. Contact Pam Ireland (01473)723179

### **Wednesday 16th September 2009 7.30pm The Dunwich Forest Project by Dayne West**

Illustrated talk in St Margaret's School Hall Ipswich.

***A full listing of all Groups events can be found from page 20.***



# Ipswich Wildlife Group

Chair: Dave Munday 01473 217310

Vice Chair: Ray Sidaway 01473 259104

[www.greenlivingcentre.org.uk/iwg](http://www.greenlivingcentre.org.uk/iwg)

*Ipswich Wildlife Group is a registered charity, relying entirely on volunteers, that promotes interest in, and conservation of, wildlife and habitats in and around Ipswich. We seek to inform and educate the local communities of Ipswich about the wildlife and habitats that can be found in the area, and the issues affecting them, as well as involve local people in practical wildlife conservation. We carry out practical conservation tasks, bid for grants to improve wildlife and green areas around Ipswich and work closely with the Greenways Project, Friends of Belstead Brook Park and other local groups with similar aims.*

## Objectives for 2010

The following objectives for 2010 are set as targets to be measured against in a year's time and which will be reported to the Charity Commissioners. They are in no particular order.

- Continue monitoring and campaigning on behalf of Kiln Meadow
- Help and advise schools taking part in our ongoing Schools Wildlife Competition
- Work towards a further increase in membership

- Continue to support and refine the newly launched Local Wildlife News
- Aim to involve more members in our activities, not only on site but also in areas such as fundraising, magazine and leaflet distribution, writing articles or snippets, and helping with publicity
- Increase the production of beanpoles and peasticks to meet the increasing demand
- Monitor progress on these aims and prepare a new set for 2011

## Kiln Meadow Update

by Ray Sidaway

The outline planning permission for developing the site expires at the end of October, so matters will come to a head shortly. We have been told by Russell Williams (acting Chief Executive of Ipswich Borough Council) & Liz Harsant (Leader of the Council) that the meeting to decide whether to sell the meadow to developers will not now take place until after the election.

We may only get a week's notice of this and so we are readying ourselves to lobby councillors and officers of the council as soon as the election is over.

We are also taking the following actions:

- We obtained the information that IBC is providing to any prospective purchasers of the site. The only statement about wildlife was a Phase 1 Ecological Survey which an ecologist thinks is flawed, and which we regard as being totally inadequate for a site of this importance, so we are asking IBC why they have chosen to exclude important wildlife details, reminding them of the duty of care they have to the wildlife on their land.
- We have written to one possible purchaser, Bellway Homes, to inform them about the importance of the site and the Babergh ombudsman judgement.
- We have amended and updated the lobby document that was originally presented to IBC. This will be sent to all Ipswich and Babergh councillors and relevant officers of IBC after the election.
- We have obtained letters of support from Natural England and from an expert on amphibians who works for the national organisation Amphibian and



© Margaret Regnault

Reptile Conservation. These will also be copied to all councillors and relevant officers.

- We are developing contacts with the media to make sure that the meadow gets good coverage leading up to the decision meeting.
- We are leafleting at meetings and events and have produced posters to be displayed in prominent places.

### What can you do?

1. Tell everyone about the campaign.
2. Get in touch with councillors in Babergh and Ipswich – in particular those Ipswich councillors who are on the council executive and who will make the final decision.
3. Check the website regularly for any campaign updates:

<http://www.greenlivingcentre.org.uk/iwg/skim.htm>



# Wildlife and Education Rangers

Office : 01473 433993 park.rangers@ipswich.gov.uk Stable Block, Holywells Park, Cliff Lane, Ipswich IP3 0PG  
*The Wildlife & Education Rangers are responsible for the management of wildlife areas within the town's parks and other green spaces. As well as carrying out practical management, the team runs an events programme and works with many local schools to engage and inspire the public about the wildlife Ipswich has to offer.*

## Ipswich Urban Biodiversity Photographic Competition 2010

Ipswich is blessed with fine parks and open spaces. They are wonderful places for people to visit and enjoy and they are also vital places for wildlife that visits or reside within them.

Ipswich Borough Council's Greenspace department is responsible for conserving and managing these areas, and do so wherever possible to benefit native species of flora and fauna. This year the Wildlife & Education Rangers would like you to wield your cameras and capture the the weird, wild and wonderful that you can find in any green space in Ipswich.

The competition runs from 31 March to 31 August. First prize will be an exclusive Foliopic Plus membership, a professional quality website for photographers and artists – worth £119 and provided by the competition sponsors, ephotozine.com

There will be prizes for the winners in an adult category and for those of 16 years or under – Free membership to ephotozine.com

The theme is "Urban Biodiversity". This is open to individual interpretation and we encourage you to be imaginative. However, entries must have the natural world at their heart or must feature wildlife (which

includes animals and plants). No pictures of domestic animals (e.g. pets and livestock) or cultivated plants either please.

Entrants can submit up to four photos as mounted prints in colour or black and white.

2010 is the International Year of Biodiversity and this competition is part of what IBC are doing to support the initiative and help promote and protect Biodiversity.

For more details and full competition rules please visit [www.ipswich.gov.uk](http://www.ipswich.gov.uk) or telephone the Rangers.



[www.ephotozine.com](http://www.ephotozine.com)

*ePHOTOzine is the UK's leading online photography magazine featuring free access to over 600 techniques and guides. We also have a huge and friendly community with an interactive gallery of over one million photos, a lively forum, daily news updates, equipment reviews, monthly prize competitions and much more.*



All photos © Matt Berry

## Annual Beanpole Festival

Sunday April 25th – 11:00am – 3:00pm  
Northgate Allotments, Sidegate Lane

Ipswich Wildlife Group, Ipswich Organic Gardeners' Group and many others host this annual festival where you can buy locally produced beanpoles and peasticks and enjoy many other attractions, workshops, displays and demonstrations.

Bring a picnic and make a day of it.

For more details contact Geoff Sinclair on 01473 327720





# GREENWAYS

countryside project

Stable Block, Holywells Park, Cliff Lane, Ipswich IP3 0PG Office: 01473 433995 [greenways.project@ipswich.gov.uk](mailto:greenways.project@ipswich.gov.uk)  
[www.greenlivingcentre.org.uk/greenways](http://www.greenlivingcentre.org.uk/greenways)

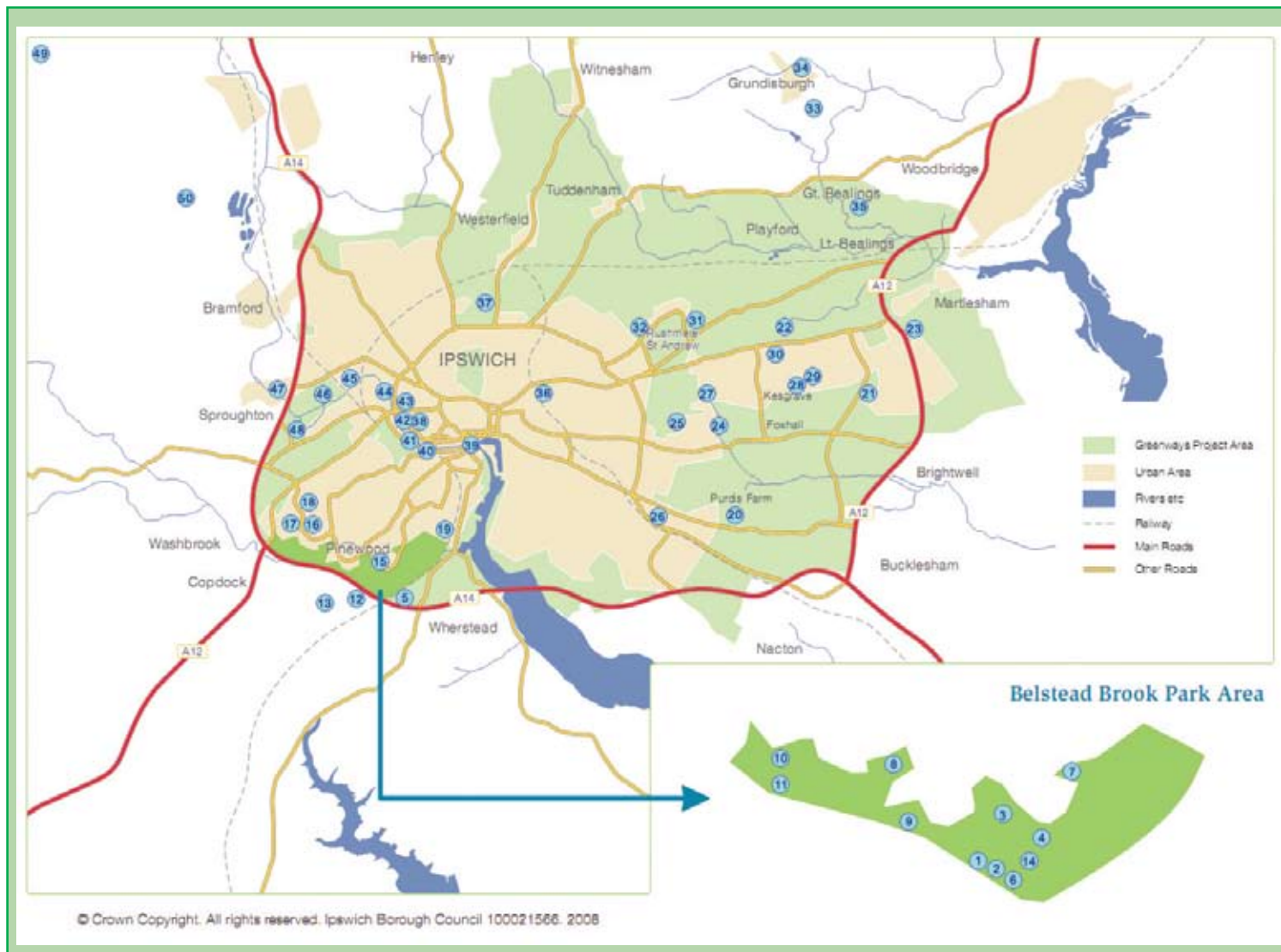
*The Greenways Countryside Project exists to protect and enhance the countryside, landscape and open space across an area of about 100 square kilometres in and around the town of Ipswich, and home to around one quarter of the population of Suffolk, for the benefit of wildlife and local people. The project relies on volunteers to complete much of its practical conservation work. The Greenways Project is a very successful and well-established partnership between Ipswich Borough Council, Suffolk County Council, Babergh District Council, Suffolk Coastal District Council and the local community.*

## 2008/09 Annual Report

The sites indicated on the map are those where the Project has carried out some practical management work between April 2008 and March 2009. In most cases, work has largely been routine annual maintenance, including path cutting, wildflower grass mowing and raking, hedge cutting, coppicing and

woodland management, heathland scrub clearance, cleaning signs and other infrastructure and litter picking. In addition, the volunteers have installed more than 30 wildlife habitat features (stag beetle piles, otter holts etc) and have improved the surface of several hundred metres of paths.

### Greenways Project Area Map



### **Cedarwood Walk, Kesgrave**

– The Project helped Kesgrave Town Council to improve the appearance and wildlife value of the area by involving dozens of volunteers along with pupils from two local schools, in a substantial wild daffodil bulb planting event. Thousands of bulbs were planted and other areas were sown with a wildflower grassland seed mix to increase the diversity of plants. The areas are now mown and raked annually at the end of the summer when all the flowers have set seed.



© Greenways Project

**Bobbits Lane allotments** – in the heart of the Belstead Brook Park, this allotment field is an important part of the ecological network. The Project has worked with plot-holders to provide habitat for reptiles and amphibians (particularly toads, due to the proximity to the very large toad population). A successful volunteer day saw about 200 hazel shrubs planted on unused areas as part of the ‘allotment forestry’ concept pioneered by Ipswich Wildlife Group. As the hazels grow, they are coppiced about every seven years to provide beanpoles and peasticks for the allotment holders – avoiding the need to import bamboo.



© Greenways Project

### **Mill Stream and Sandlings Local Nature Reserves, Rushmere St Andrew**

– the Project has helped Suffolk Coastal District Council to manage these open space sites for more than a decade. Active management work over the years has created two very valuable wildlife sites for local people to enjoy. In recognition of this, Suffolk Coastal declared the sites as Local Nature Reserves (LNRs). A celebration event was held in the summer, which attracted over 100 local residents. Volunteer work parties help maintain a very wide range of habitats from wet fen and willow scrub to dry acidic grassland and elm hedges.



© Greenways Project

## List of sites

### **Belstead Brook Park**

- 1 Spring Wood (LNR)
- 2 Millennium Wood (LNR)
- 3 Bobbitts Lane Meadows (LNR)
- 4 Ashground Plantation (LNR)
- 5 Bobbitts Lane – upper area
- 6 Butterfly Ride
- 7 Stoke Park Wood (LNR)
- 8 Ellenbrook open space and Playing Field
- 9 Thorington Park open spaces
- 10 Belstead Meadows
- 11 Belstead Lower Meadows (CWS)
- 12 Thorington Hall Farm area
- 13 Belstead Heath
- 14 Bobbitts Lane Allotments

### **Southern fringe**

- 15 Netley Close open space
- 16 Belmont Road Wood
- 17 Belmont Road open space
- 18 Pinewood Community Centre
- 19 Maidenhall Allotments (Community Garden)

### **Eastern Fringe**

- 20 Purdis Heath (SSSI), Purdis Farm
- 21 Martlesham Heath (SSSI)
- 22 Sinks Valley (SSSI), Kesgrave High School.
- 23 Martlesham Common (CWS)
- 24 Mill Stream (LNR), Rushmere St Andrew
- 25 Sandlings, (LNR), Rushmere St Andrew
- 26 Warren Heath (CWS)
- 27 Farthing Wood, Kesgrave
- 28 Long Stropps Pond, Kesgrave
- 29 Cedarwood Green, Kesgrave
- 30 Legion Green, Kesgrave
- 31 Chestnut Pond, Rushmere St Andrew

### **Northern Fringe**

- 32 Rushmere Cemetery
- 33 Grundisburgh Millennium Meadow
- 34 Lyttleton's Meadow, Grundisburgh
- 35 Kiln Farm Meadow (CWS), Gt Bealings
- 36 Former St Mary's Convent site, Woodbridge Rd.
- 37 Fonnereau Way

### **Western Fringe and the River**

- 38 Alderman Canal (LNR)
- 39 River Path – Stoke Bridge
- 40 River Path – Princes St to West End Rd
- 41 River Path – West End Road
- 42 River Path – West End Rd to Handford Rd
- 43 River Path – Handford Rd-Yarmouth Rd
- 44 River Path – Yarmouth Rd to Riverside Road
- 45 River Path – Boss Hall
- 46 River Path – ex-Sugar Factory
- 47 River Path – A14 to Sproughton
- 48 Churchman Way

### **Wider Area**

- 49 Priestley Wood (SSSI), Barking
- 50 Valley Farm Meadow (CWS), Lt Blakenham

## Key Achievements in 2008/09

- Work on at least 50 sites
- Joint Project Officer with CSV Media to involve more volunteers
- 1504 volunteer days (worth £75,000) or equivalent to about seven full time staff.
- Production of newsletter promoting the events of 15 local groups
- Support for six local conservation groups and community organisations
- Provided opportunities for four groups of staff from local businesses to work on our sites
- Looked after seven Local Nature Reserves, three SSSIs and four other County Wildlife Sites
- Several interviews on BBC Suffolk about Autumn watch, Spring Wood, Belstead Brook Park Megabash and the ‘Don’t Be a Tosser’ anti-litter campaign.
- Overhaul of website
- 15 events, walks or talks promoting our sites, wildlife or related issues.
- Over £30,000 of external funds raised to meet the deficit in the Project budget – plus funding for the Joint Project Officer with CSV.



© Colin Hullis

# The First 15 Years

## Volunteers

Throughout the life of the Project, volunteers have been central to our success – without the regular and dedicated help of local people, it would have been very difficult to manage around 50 nature reserves and open spaces. Over 15 years, around 14,000 volunteer days have been contributed – which can be said to be worth almost £750,000 – or the equivalent of about four and a half full-time staff!



Volunteers working with the Project have been involved in an extremely wide range of practical activities from building bridges and boardwalks to planting trees, and from building dormouse boxes to otter holts! Many volunteers help as individuals in our

regular weekly teams, whilst others get involved through community groups and other organisations.

As well as the obvious benefits of the volunteers' efforts – improved access to countryside and open

space and enhanced wildlife habitats – there are other important outcomes, including: a strong sense of 'ownership' of sites by local people; opportunities for people to keep healthy and fit; a great sense of achievement when tasks are completed; opportunities for



participants to progress by learning new skills, attending training courses and in some cases, successfully gaining paid employment in the profession.

## Key achievements

As well as supporting more than 14,000 volunteer days of practical work in the countryside in and around Ipswich in the last 15 years, we have also completed a range of other important projects.

- Management work carried out on almost 100 different sites
- Ongoing management of key sites including Belstead Brook Park, the River Gipping corridor, Declaration and management of seven Local Nature Reserves and work on four Sites of Special Scientific Interest.
- Planting and creation of Millennium Wood adjacent to Spring Wood (Ancient Woodland)
- A key partner in the preparation of the Ipswich River Strategy
- More than £250,000 of external funding brought in up to 2008, with larger grants awarded in 2009.
- Delivering extremely good value for money for funding partners
- Many volunteers and others engaged with the Project have benefited from learning new skills, often pursuing relevant educational courses and even



finding employment in related jobs.

- Overseeing the Countryside Stewardship scheme for Thorington Hall farm in Wherstead.
- Supporting the valuable efforts of local conservation groups and 'Friends Of' groups
- Design and installation of more than 30 site information boards.



- Installation of waymarkers and publishing of leaflets for the Fonnereau Way, Churchman Way, and Rushmere Jubilee Walk.
- Three years of Big River Clean Ups attracting more than 450 volunteers
- Organising more than 100 public events, walks and

talks to promote wildlife and countryside issues to a wide audience

- Installation of three new bridges over the Belstead Brook, including use of a helicopter to deliver components for one!
- De-silting of Alderman Canal
- Creation, surfacing or resurfacing of several miles of foot and cycle paths, including bridges and boardwalks in wet areas
- Involvement with installation of several artworks along the River corridor

## Biodiversity

**Otter** – This is a species that seems to be recovering well in Suffolk rivers. Otters are seen on the Belstead Brook as well as the Gipping and Alderman Canal right in the heart of Ipswich.

**Water vole** – A well publicised decline in this species is mostly linked to habitat loss and predation by American mink. Like otters, water voles can be seen (if you're lucky!) along the Belstead Brook, the Gipping, Alderman Canal and Mill Stream in Rushmere St Andrew.

**Stag Beetle** – Britain's largest beetle is regularly seen throughout Ipswich. South Suffolk is a hot spot for the beetle, and much work has been carried out by the Project over the years to increase the supply of suitable dead-wood habitat. The beetle exists for up to seven years as a large white grub, slowly munching dead wood, before emerging in its unmistakable form in May or June. The beetle then flies, mates and dies within a few short weeks.

**Silver-studded blue** – A very rare butterfly restricted to lowland heathland habitat. Around Ipswich there are several sites where populations are clinging on, such as Purdis Heath, Martlesham Heath and Ransomes Europark. Volunteers have helped over the years to manage these heathland habitats to support this beautiful butterfly along with hundreds of other species of plants and animals that depend on heathland.



© Keith Marshall



© Smudge



© Dave Fincham



© Dave Fincham

## Partners and Funding

Over the years, the Project has proved to be an extremely effective partnership, not just between the local authority funding partners, but with a wide range of other local groups, Parish Councils, businesses and individuals.



## The next 15 years

The Project is currently working very hard to further enhance the nature reserves and green spaces in and around Ipswich, and has been successful with several funding bids which will help to ensure even greater opportunities for people to access and enjoy their local countryside and hopefully take part in caring for it.

Funding from the Big Lottery, via "Access To Nature" will allow us to actively seek the involvement of those parts of our community that do not traditionally get involved in wildlife and countryside issues and volunteering. The grant has been awarded to CSV Media (Community Service Volunteers) in partnership with Greenways, so we will be able to benefit from the extensive community engagement expertise of CSV. The grant will also fund real improvements 'on the ground' over the next three years.

We will also (hopefully) be spending the second year of our grants from the Haven Gateway, on the 'River For All' and Belstead Brook Park projects. The 'River For All' funding should provide newly surfaced paths and a new bridge at Alderman Canal Local Nature Reserve; directional signage along the river corridor; new information boards; a leaflet and another year of the River Ranger post.

Looking further into the future (if we dare!) we would like to think that we will be involved in the creation of new green spaces around the Project area as well as continuing to look after the sites we have at the moment. I hope that more local people will visit and enjoy green space around Ipswich, the range of wildlife species found is maintained and even increased and that more people find enjoyment from being actively involved working on the reserves.

## How to get involved

If you would like to be involved in any way with the work of the Greenways Project, or would like any further information about the Project, its aims and its work, please contact the Project on 01473 433995, or email [greenways.project@ipswich.gov.uk](mailto:greenways.project@ipswich.gov.uk)

Some further information can be found on our web pages at: [www.greenlivingcentre.org.uk/greenways](http://www.greenlivingcentre.org.uk/greenways)



© Tim Kenny

# Friends of Christchurch Park

Secretary: Ann Snook 01473 251037 Membership Secretary: Robert Fairchild 01473 254255

Events/Meetings: David Routh 01473 255680

*The sole purpose of the Friends Group is to help look after the Park for the public good, and to promote its welfare. Anyone who shares this aim is welcome to join. For a small annual fee of £5 you can join in Friends activities all year round, including Illustrated talks and discussions, Guided Park walks & Practical conservation work. You will also receive an informal seasonal newsletter.*

## The Birds of Christchurch Park

by Reg Snook

Situated near the centre of Ipswich, Christchurch Park covers an undulating area of about 82 acres (33 hectares) falling steeply from north to south, and features grassy areas, tree-lined walkways, Arboreta, an historic Round Pond, a newly renovated Wilderness Pond and a Wildlife Reserve. Mammals to be found there include the inevitable grey squirrel, three species of bat (noctules, pipistrelles and Daubenton's), an ever-increasing number of foxes, a plentiful supply of rabbits and the odd muntjac. Birdlife is varied, although sadly, as Ipswich has expanded over the years, a few species have disappeared. Not so many years ago, there was a rookery in the trees near the lower Fonnereau Road Park entrance and hawfinches frequented the Arboreta. Gone too, following the national trend, is the lesser-spotted woodpecker and it is feared that the spotted flycatcher, until recently a breeding species, has also disappeared.

On the brighter side, however, it is still possible to see 40-50 different types of bird. Last year sparrowhawks successfully raised three young, proving that there is ample food available in the area. The Wilderness Pond is home to resident mallard, moorhen and Canada geese, and the Friends are currently erecting nesting boxes on the islands' trees to encourage the beautiful



© Chris Courtney

mandarin duck to become an even more successful breeding bird. Kingfishers have at last reappeared on this renovated pond and herons are regular visitors in the early morning to feed on the vast numbers of fish to be found there.

The ancient oaks and sweet chestnut trees provide nesting sites for carrion crows, jackdaws, stock doves, nuthatches and at least two pairs of tawny owls. The Friends have also erected a large number of nest boxes in the Wildlife Reserve to encourage blue and great tits and the several pairs of treecreepers to breed there. The grassy slopes are ideal for viewing redwing, fieldfare, mistle thrush and green woodpecker.

Whilst birdwatching in the Park, it is always a good idea to look upwards. Last year, osprey, red kite, peregrine falcon, common buzzard, hobby falcon, sparrowhawk, kestrel and alpine swift were all observed.



© Matt Berry

## Friends of Holywells Park

Contact Peter Scotcher 01473 463860 or [peterscotcher@btinternet.com](mailto:peterscotcher@btinternet.com)

*The Group aims to work in partnership with Ipswich Borough Council to improve and promote the Park.*

The Friends of Holywells Park (FoHP) is a voluntary group devoted to Holywells Park. Holywells Park is located in east Ipswich with entrances from Myrtle Road, Bishop's Hill, Nacton Road and Cliff Lane. It has woodlands, ponds, meadows, an amazing play area with summer water play feature, formal trees and short grassy areas. FOHP undertakes practical work through volunteer work parties and holds events to both celebrate the Park and encourage more people to use

and explore the Park. Winter work parties this winter have involved enlarging and desilting a wildlife pond, pruning fruit trees in the orchard, making habitat piles and planting 70 native shrubs and trees in a patch of woodland previously dominated by sycamore. Look out for our family events (listed in this journal); these are free to attend and open to all - donations are most welcome and are ploughed back into meeting the costs of events or making improvements to the Park.



# Portal Woodlands Conservation Group

Enquiries: Martlesham Parish Council 01473 612632

*The Portal Woodlands Conservation Group was formed as a working group of Martlesham Parish Council in November 1999 to conserve the woodlands which lie west of the Suffolk Police HQ and alongside the A1214. Volunteers meet each month to work on a variety of projects. These have included planting trees & hedges, repairing Second World War structures, creating wildlife habitats and involving local schools and organisations in conservation. Anybody is welcome to join this friendly group. Training and tools are provided.*

As the ground starts to warm up, we see the first signs of spring and an end to the cold weather and dark evenings. There will be lots of activity in the woods, with our feathered friends busy preparing their nests for their offspring. The trees start to awaken and buds appear. It is a wonderful time, new life, new growth and new adventures. Why not take an adventure yourself and share in the wonder of this lovely little woodland. For some of you, who may be new to this area, our little woodland is situated behind the Martlesham Police HQ and can be accessed via their access road on the right, or from walking alongside Gorseland School, Deben Avenue and heading to the left of the green Control Tower building, visible from the school.

By the time you read this the AGM will have taken place. I know there will be a few of you who will be kicking yourselves for not coming along and finding out more information about the group. Do not worry, you are welcome to come to any of the workdays throughout the year, we are always looking for new volunteers. Please do not think of the workdays as hard gruelling work sessions, far from it. Everyone does as much or as little

as they like. No specialist gear is required, just wear old clothes and sensible footwear and we provide the tools, the cake and a cuppa, and of course some cheerful banter. See you there sometime!

Working party plans - our main work over the next few months will be to continue to clear trees and bushes damaged by the snow, keeping the pathways safe and clear, progressing the clearing of scrub to make way for our 'oak avenue' and hazel plantation, continuing our renovation of wartime artefacts and establishing some way-marked routes for strolls through the woods . Nature Watch Club - April sees the new sessions begin. If your child enjoys being outside and learning about nature why not find out more information and bring them along. (See below for web site).

For more information about PWCG and its activities, please access our website at [www.martlesham.org.uk/portalwoodlandsgroup](http://www.martlesham.org.uk/portalwoodlandsgroup) , or if you have any questions please email us at [pwcg@martlesham.org.uk](mailto:pwcg@martlesham.org.uk) or phone Martlesham Parish Council.

Jocelyn Cook



Membership Secretary Bill Stone, 27 Draymans Way, Ipswich, IP3 0QU [www.sogonline.org.uk](http://www.sogonline.org.uk)  
*SOG is the Group for people interested in the birds of Suffolk, and provides a network and a voice for birdwatchers in the county. The Group is administered by Suffolk birdwatchers for Suffolk birdwatchers, keeping them in touch with what is going on and with each other. Through the Group's Council, SOG has good links with other naturalist and conservation organisations in the region.*

SOG organises an extensive programme of field meetings, an opportunity for members, young or old, novice or expert, to see birds, and to share camaraderie with fellow enthusiasts. Indoor meetings are held at Holiday Inn, London Road, Ipswich with quality speakers entertaining members with slides and stories, both local and from around the world. The Group's bulletin, 'The Harrier', published quarterly, keeps members in touch with what's going on - stories about birds, conservation, reserves, and people.

SOG organises and promotes surveys and projects on

the birds of Suffolk, with an opportunity for members to participate. SOG is also able to support worthwhile projects through bursaries.

Membership of SOG is open to anyone with an interest in the birds of Suffolk. Rates are £13 for singles and £15 for families. A joint membership with SNS is available for £26 for singles and £30 for families representing a saving of £2 on combined membership rates and entitling members to a copy of 'The Suffolk Bird Report' as well as to the SNS bulletin 'White Admiral', published three times a year.



# Friends of Belstead Brook Park

Temporary Contact: Greenways Project on 01473 433995 or [greenways.project@ipswich.gov.uk](mailto:greenways.project@ipswich.gov.uk)

*The Friends of Belstead Brook Park (FOBBP) was set up in 2002 to help look after the 250 acres of informal country park on the south-western fringe of Ipswich. The group runs practical work parties, helps raise funds for improvements and acts as 'eyes and ears', passing information back to the Greenways Project.*

The group has continued to run practical work parties throughout the Park during the winter months, and looks forward to seeing many more people at future events, including the Spring Wood celebration event on Monday 3rd May (see advertisement on page 3).

Despite the very sad death of Steve Thorpe last October, the group has been determined to carry on its work in Belstead Brook Park and would welcome anyone else who would like to be involved in taking the group forward.

## Tribute to Steve Thorpe

Everyone who knew Steve was deeply shocked and saddened by his sudden and unexpected death from a heart condition late last October.

In his various roles as founder and co-ordinator of the Friends of Belstead Brook Park, a dedicated Greenways Tuesday volunteer and Spring Wood volunteer, the Pinewood Parish Tree Warden, a regular 'toad patroller' and a Save Kiln Meadow campaigner – Steve could always be relied upon not only to be there, but to be a cheery, humorous, knowledgeable and hard working member of any group.

When I first met Steve, back in 2001, in his role as Pinewood Tree Warden, I remember being instantly struck by his passion and commitment and also his great interest in the natural world as a whole. After only a few brief discussions it became clear that he was really keen to set up a Friends group for Belstead Brook Park as he lived on the doorstep and already knew every inch of the area due to exploring and looking for notable trees. 2002 saw the start of the Group, which has thrived, involving and educating local people in the Park and helping with active management – all things which the Group continues to do very successfully.

At around this time, Steve also became a regular volunteer with the Greenways Project's Tuesday volunteer team, contributing time and effort each week and becoming a greatly valued friend to me and, I am sure, to many of the regular volunteers.

Steve was simply an inspiration to us all: he selflessly gave so much of his time to help care for his local environment, and his calming yet hard-working manner in particular, helped everyone around him to achieve a great deal in this regard.

I, for one, will look back very fondly on that kind and gentle sense of humour, the pyromaniac tendencies

© Margaret Regnault



(the ex-Fireman in him) and, of course, the shorts! Whatever the weather, Steve would be wearing shorts – a constant source of amusement and wonder to us all!

I know that Belstead Brook Park and all those who visit it are all the richer for his dedicated involvement, as we are for his friendship. I hope that he knew what an important part he played in inspiring others and looking after his local patch, and how much this was (and is) appreciated.

We give thanks for the ways in which he touched our lives and send our sincere condolences to his family and friends.

Maybe, when the weather is warmer, we will don our shorts (briefly!), raise a mug of tea and say: "Thank you Steve."

James Baker



# Ipswich Local Group

Membership Secretary: c/o 19, Marlborough Road, Ipswich, IP4 5AT Email: [chrisc.courtney@yahoo.co.uk](mailto:chrisc.courtney@yahoo.co.uk)  
[www.rspb.org.uk/groups/ipswich](http://www.rspb.org.uk/groups/ipswich)

*Belonging to RSPB Ipswich Local Group is a great way to meet friendly, like-minded people in your area, while learning more about birds and other wildlife.*

## White-tailed Eagle over the Orwell!

by Chris Courtney

As many readers will be aware, a partnership project to re-introduce the white-tailed eagle (AKA sea eagle) to the lowland estuarine habitats of East Anglia has been running through various aspects of its feasibility phase, over the past three years. Led by Natural England in conjunction with the RSPB and with additional support from the Forestry Commission, the project has more recently, gained the endorsement of the Suffolk Coasts and Heaths Area of Outstanding Natural Beauty.

Geographically, Suffolk with its fine estuarine and wetland habitats, is situated at the heart of a wider region of suitability for this species, ranging from the Wash to the Thames estuary and north Kent marshes beyond. Of course Sea eagles are undeniably large birds and with a wingspan approaching 2.5 metres, it was once famously described by a Fair Isle resident, as looking a bit like a 'flying barn door'. Naturally, with its imposing size, (Britain's largest, and the fourth biggest eagle in the world), it can provoke both a sense of awe, in its sheer magnificence to many, while in others creating a feeling of disquiet.

However, experience in regions of Europe including northwest Scotland, where white-tailed eagles are already established, is that co-existence with man, in close proximity with farming, livestock and human habitation creates in reality, few if any significant problems. Indeed, as Iain Dunnett, the manager of the 'Suffolk – the Greenest County' project has concluded, after visiting Mull and Hungary, where white-tailed eagles live alongside agriculture, "The local population, including farmers, have embraced the eagle.....The challenge [here] for farmers and landowners is to overcome perceived fears and enable the re-introduction to occur with farmers receiving the maximum benefit".

White-tailed eagles are now breeding in such densely populated countries as Holland and even right to the edge of metropolitan Hamburg and Berlin, (there are around 400 pairs in Germany) and yet (well they are only large birds) normal life carries on! Although it is not true to say that humans do not cause problems for the eagles, with deaths to birds consuming lead shot from scavenged prey, being attributed to 10 deaths of German birds, (including one of the Berlin individuals) during the winter of 2008/09.

As suggested above, by preference, white-tailed eagles



© Bill Baston

are essentially scavengers, but are also kleptoparasitic, sometimes robbing other raptors and gulls and especially otters of food. At times they will hunt for their own fish, water birds and small mammals but usually favour surprise, over agility in catching prey. Earlier fears in relation to bitterns, especially here in Suffolk, where bitterns display a propensity for long and ponderous feeding flights, have now been allayed after exhaustive consultation with experts. In general, the risk is deemed to be minimal, with bitterns virtually unknown as a prey species and with no actual observations recorded, despite both species co-existing in many areas. In addition, white-tailed eagles only rarely attack birds in flight, even less often successfully, and in general prefer easier prey items or indeed to scavenge.

The fact is, that there are many tangible benefits, with eagle-derived tourist revenue on Mull alone, estimated to be worth £2m per annum, plus the ability possessed by such iconic species to generate broader public enthusiasm and support for conservation initiatives. In Suffolk, there would also be educational opportunities, for schools to follow birds via satellite tracking, as well as increased opportunities for volunteering.

The fact is, that for some individuals and sectors of the population any discussion of birds of prey or indeed almost any predatory species, can result as Simon Barnes recently commented in The Times, in a situation where "common sense jumps out of the window". Around parts of Suffolk, landowners have erected large signs imploring passing motorists to 'Say no to sea eagles'. Why? Well again over to Simon Barnes,



# Ipswich Local Group

© Bill Baston



“Because they’ll eat babies, they’ll eat dogs and cats and they’ll eat all the piglets from the free-range piggeries. The [real] answer is because they’re birds of prey that play havoc with human minds”.

And Simon is not exaggerating. Witness the steady flow of emotive letters to the regional press and what can only be termed Robin Page’s insane recent rants in the Daily Mail and Daily Telegraph. These pieces often written by

sympathisers, if not the perpetrators of some of the 200+ illegal bird of prey deaths, (reported to the RSPB in 2008 alone), by those who in every other respect, would view themselves as upright and law-abiding citizens.

But casting aside, as we must, the emotive and the irrational, the principal serious concern right now, would appear to be the potential for these eagles to scare, rather than to kill livestock that is at issue. Indeed, this very concern was highlighted in the conclusion to the recent report by the Farmland and Wildlife Advisory Group, which has now led to a further investigation by the Food and Environment Research Agency who are investigating methods to mitigate such potential risks. What is required, is for those farmers who do have concerns, and similarly for bodies such as the Countryside Land and Business Association, to wholeheartedly engage in these discussions, so that all these concerns can be properly and rigorously examined.

Another area of discussion has centred on whether this would genuinely be a re-introduction, given the apparent paucity of historical records.

Certainly as winter visitors, records show, the birds occurred with regularity in Suffolk, throughout most of the nineteenth century, when the majority were either trapped or shot. A smattering of records continued across the twentieth century, with the highest incidence occurring between 1982 and the millennium. Indeed a bird was seen at Martlesham on 1st February 1982, and as well as the intervening records, up to two birds were noted at various points along the coast during the winter of 1999/2000 as well as a further bird in Norfolk in 2005.

Of course the contemporary association with these birds and the rugged rocky coastlines of northwest Scotland and Norway has more to do with these habitats being the last bastions of persecuted populations, than that most favoured by the eagles themselves. In fact, highest breeding productivity, and therefore prime habitat is

achieved in lowland estuarine and coastal regions, i.e. those closely resembling the areas now under consideration in this project.

Considerable, but somewhat ambiguous evidence exists in terms of historical place names, as well as significant archaeological evidence that led Derek Yalden to conclude widespread occurrence of the species during Roman and Anglo-Saxon times in lowland southern Britain, (British Birds, August 2007). Citing material from research into a new book currently in preparation, zooarchaeologist, Dale Serjeantson, of Southampton University, has stated that the evidence for the species breeding in East Anglia, is actually ‘quite abundant’, this leading her to the conclusion that these birds must have at one time, been ‘quite common’.

Clearly, over a much longer timescale and with numbers in Europe (and Scotland), slowly increasing this species could potentially, naturally re-colonise our region. A similar debate in the Netherlands, over re-introduction was forestalled, when a seemingly pre-breeding age pair did stay on and manage to reproduce in 2006. However, in Holland unlike Suffolk, over wintering by several birds was an annual event, and with a naturally slow reproductive rate a similarly natural range expansion here, must remain very uncertain.

All being well, with a successful outcome to the public consultations this summer, a licence will be granted and the first birds will be released in Suffolk in 2011.

So hopefully, some few decades hence, white-tailed eagles will have become an integral part of the fabric of our region, coming readily to the mind’s eye, when conjuring up images of our beautiful county of Suffolk. As to the fuss and bother of the malcontents and the scheme’s opponents during the early 21st century ... a scarcely remembered footnote. So, keep your eyes to the skies, and who knows, I do hope very soon, that peregrines will not be the only spectacular raptor to grace the Orwell!



Each year we run a popular programme of both indoor and outdoor events. From September through to April, we host monthly indoor meetings at Sidegate Primary School, Sidegate Lane, Ipswich. (Normally, 2nd Thursday of the month at 7.30pm). Here invited speakers give illustrated wildlife and conservation-themed talks. Throughout the year our experienced field leaders escort groups to some of the very best local spots for watching birds and other wildlife. Beginners are very welcome, so don’t worry if you’re not too sure of the difference between a dunlin and a knot, everyone is very friendly and someone will be only too happy to help you to get the best out of your day!

Three times a year we publish our newsletter, the ‘Orwell Observer’ containing a variety of articles and



# Local Wildlife News Snippets

## Redshank spotted!

On a cold January day with snow on the ground and the River Gipping partially frozen I ventured upstream along the river path, armed with a bowsaw and loppers to the sugar beet factory where snow had brought down some bushes across the path. I was rather surprised to see a Spotted Redshank walking along the path ahead of me. A very elegant bird, resembling a cross between a Common Redshank and a Godwit, they are more usually seen on the coast in marshes, estuaries and lagoons.

*River Ranger*

## Muntjac on the market

I was at the top of Lloyd's Avenue one morning in January, walking down towards Lloyd's Arch and the market when I saw a dog-like animal racing through the arch and up the hill towards me. At first I thought it was a greyhound that had escaped



© Dave Fincham

its owner, but I soon realized that it was a Muntjac deer. It raced past astonished taxi-drivers, nearly bowling over a startled woman at the top of the hill and then disappeared in the general direction of Christchurch Park. When I got to the market, the traders were on their mobiles, telling their mates about the deer that came shopping: "It was a deer in the market – no I haven't been down the pub. I managed to sell it a half-a-dozen apples and a bunch of grapes. Yeah – it was one of them humpbacks."

*Ray Sidaway*

## Ipswich Wildlife Group was awarded a £6000 grant from the Awards For All

(Lottery) programme last year and are currently using the funds, in partnership with Greenways and CSV, to promote opportunities for more people to become involved in practical conservation volunteering in the area. The funding is being spent on new tools and equipment; relevant training courses for volunteers; volunteer expenses and publicity materials – including this magazine.

## Lonely winter Blackcaps

I've spotted several overwintering Blackcaps recently, and wonder how early they would breed. There was one lonely looking female in Margate Road on Feb 14th and then one singing male in Marlborough Road, and a male feeding with two Waxwings.

*Peter Locke*

## Peregrine enjoys pub meal



© Vearl Brown

One evening early this year the new landlord of the Brewery Tap on Cliff Quay went out to put his chickens to bed and found, on the lawn of the walled garden, a Peregrine Falcon 'cowled' over a Feral Pigeon. It was reluctant to fly but when it did it had eaten the whole of both of the pigeon's breasts.

*Peter Locke*

I'd like to take this opportunity to offer a big thanks to all the volunteers and everyone else who have helped so far in improving the river corridor for people and wildlife. If you would like to help improve the river corridor, raise issues or get involved in any way, please contact me. I will also be running volunteer work parties on Wednesdays and Thursdays. I usually start from Holywells Park. Please ring if you can help.

*Peter Scotcher*

Greenways Countryside Project River Ranger 01473 433995 / 07736 826054

photographs, many contributed by members, as well as news of the group's activities and updates from all the nearby RSPB reserves.

The group is run entirely by volunteers, with individual members determining the degree to which they wish to be involved. Some simply enjoy reading the 'Orwell Observer' at home, or attending our various meetings, others, choose to take on a more active role, by perhaps helping run the group, or by volunteering some time for fundraising, help with local community events, practical conservation or campaign work. Being part of an RSPB Local Group, can if you wish, provide an opportunity to access most, of the wide-ranging conservation based activities, of the broader RSPB. So whether your interest is in local wildlife, farming issues, saving the rain forests or protecting Albatrosses

in the South Seas, there are lots of ways to get further involved.

Local Group membership, (distinct from RSPB membership), is only £3 a year, (£1 for under 16s), for this, you will receive; the Orwell Observer, free access to field meetings and reduced rates to our indoor talks. A money saving season ticket is also available for £14 adults, £12 over 60s, £8 under 16s, - this includes comprehensive entry to all indoor meetings.

Alternatively, we offer a FREE e-membership. e-members receive an electronic edition of the 'Orwell Observer' three times year.

If you'd like to join please send details of your name, address, telephone no. and email together with any remittance as applicable.

# Events Diary

## **April – Date to be confirmed Greenways, FoBBP, IWG Belstead Brook Park DON'T BE A TOSSER III**

Keep your eyes open for the third clean-up event in this series, centred around Spring Wood. Details from James Baker 01473 433995

## **Saturday 3rd April 11am – 2pm FoHP Holywells Park EASTER EVENT**

Open to members of the Friends of Holywells Park and non-members alike, this is a family fun event with activities for children including: treasure trail, bonnet-making; spring sticks, spring curtain, colouring and refreshments. The event is free but we seek donations for refreshments. Find us on the Terrace, Holywells Park. Directions from the Stable Block near the Cliff Lane entrance. Details from Peter Scotcher 01473 463860

## **Wednesday 7th April 10am – noon IBC Rangers Chantry Park EASTER EGGSTRAVAGANZA**

Meet the Rangers in front of the Mansion (Hadleigh Rd Entrance) in Chantry Park to start this year's Easter Trail. Follow the clues around the park and solve the quiz to receive your certificate and chocolate egg at the end. Child £2/Adult £4. Booking essential Rangers 01473 433994

## **Saturday 10th April 10am FoBBP Belstead Brook Park WORK PARTY**

Join the Friends of Belstead Brook Park for a day of work to improve the paths and access to the park. Meet in Bobbits Lane car park. Details from Greenways Project 01473 433995

## **Sunday 11th April 10am – 1pm MCG Martlesham WORK PARTY**

Join the Martlesham Conservation Group on Martlesham Heath SSSI today for their regular work party. Meet at the Douglas Bader pub. Details from Phil Smith 01473 625630

## **Tuesday 13th April 10am RSPB Bridge Wood BIRDING WALK**

This walk is hosted by the Ipswich group of the RSPB and starts at the car park in Orwell Country Park. TM188408. It is free for RSPB members. Details from Kathy Reynolds 01473 714839

## **Wednesday 14th April 12:30pm – 1:15pm Greenways Gippeswyk Park WILDLIFE WALK**

A walk from the Councils' headquarters to the little known Gippeswyk Park using the Bobby Robson bridge and the river path to return. Booking essential Peter Scotcher 01473 433995

## **Thursday 15th April 1pm – 3pm IBC Rangers Christchurch Park GREEN MAN**

The Green Man, a mythical figure often portrayed as a mask made of leaves typically carved in wood or stone. Join the Ranger in Christchurch Park to learn more and make your own mask. Meet at Reg Driver Visitor Centre. Child £2/Adult £4. Booking essential Rangers 01473 433994

## **Sunday 18th April 10am - Noon PWCG Martlesham Heath WORK PARTY**

Come along and lend a hand at today's Portal Woodlands Conservation Group work party in the woodland. Meet opposite the Police sports field entrance in Portal Avenue. Details from Duncan Sweeting 01473 612632

## **Sunday 18th April 10:30am IWG & FoBBP Spring Wood WORK PARTY**

Join Ipswich Wildlife Group and the Friends of Belstead Brook Park for the final processing of the coppiced material in preparation for the Beanpole Festival next week. Meet at the stepped entrance to the wood. Details from Ray Sidaway on 01473 259104

## **Wednesday 21st April 7:30pm SWT Bolton Lane TALK: CREATING A LIVING LANDSCAPE**

This illustrated talk by Michael Strand of SWT, is hosted by the Ipswich group of the Suffolk Wildlife Trust at St. Margaret's School Hall in Bolton Lane and starts at 7:30pm. Admission £2. Details from Dave Munday 01473 217310

## **Wednesday 21st April 7:30pm SNS Copdock AGM & "A Flora of Suffolk"**

Suffolk Naturalists' Society hold their AGM in the Wolsey room at the Holiday Inn, nr Copdock, Ipswich this evening, after which Martin Sanford will introduce his new book – "A Flora of Suffolk"

## **Thursday 22nd April 7:30pm RSPB Sidegate Lane AGM & TALK: Zebras to Albatrosses, Wildlife of KwaZulu Natal and Western Cape**

This illustrated talk by Ian Barthorpe, RSPB Marketing and Publicity Officer for the Suffolk Coast is hosted by the Ipswich group of the RSPB at the Sidegate Lane Primary School. Admission £1.80 members/£3.00 non-members. Details from Chris Courtney 01473 423213

## **Saturday 24th April PWCG Martlesham NATURE WATCH CLUB**

Nature Watch is a club mainly for 5-11 year olds, to come into the woods with their parents or guardians to enjoy organized nature projects, develop conservation skills and work towards awards under the RSPB Explorer Award Scheme. To find out more details and book a place for 2010, please send an email to naturewatch.pwgcg@martlesham.org.uk. Details from Duncan Sweeting 01473 612632

## **Sunday 25th April 3:30pm RSPB Barking Woods FIELD MEETING: Spring Birds and Flora**

See the woods at their best. Meet at Barking Church. 2-3hrs. 4-5miles. TM076535. Details from Stephen Marginson 01473 258791

## **Sunday 25th April 11am – 3pm IWG, IOGG Northgate Allotments BEANPOLE FESTIVAL**

Ipswich Wildlife group, Ipswich Organic Gardeners' Group and many others invite you to buy your locally produced beanpoles and peasticks and enjoy the many other attractions, workshops, displays and demonstrations around the Northgate allotment field today – bring a picnic and make a day of it. Details from Geoff Sinclair 01473 327720

**Saturday 1st May 4:30am – 6am IBC Rangers Christchurch Park DAWN CHORUS**

Join us on International Dawn Chorus Day for a walk around Christchurch Park. Learn bird song and enjoy the wonderful array of woodland birds that can be found here including bullfinch and tree creeper. Breakfast in the visitor centre. Meet outside the Reg Driver Visitor Centre visitor centre. Please telephone for further information and ticket prices. Booking essential Rangers 01473 433994

**Sunday 2nd May 4:30am SWT Alton Water DAWN CHORUS with the Shotley SWT Group**

If you have never been on a Shotley Group Dawn Chorus, this is an event to experience. The walk is led by a number of expert birders and is followed by a sumptuous breakfast at the Ewarts' house. Numbers are limited at this popular event. See [www.altonwildlife.co.uk](http://www.altonwildlife.co.uk) Booking essential Mike Ewart 01473 328281

**Wednesday 5th May 12:30pm – 1:15pm Greenways Spring Wood BLUEBELLS IN SPRING WOOD**

Visit this ancient woodland in the heart of the Belstead Brook Park at the best time to see the wildflowers and range of woodland products made from coppiced material in the wood. Details from James Baker 01473 433995

**Wednesday 5th May 7pm – 8:30pm IBC Rangers Pipers Vale DUSK CHORUS**

In Pipers Vale Local Nature Reserve come and listen to the summer song of migrant and resident birds. Learn why birds sing, the calls they make and how to distinguish between them. Don't forget your binoculars. Child £2/Adult £4. Booking essential Rangers 01473 433994

**Saturday 8th May 4:30am – 6am IBC Rangers Holywells Park DAWN CHORUS**

Join the Rangers in Holywells Park for an early morning walk. A wide range of birds will be seen and heard in the mixture of habitats this park has to offer. Will the Nightingale make a return this year? Child £2/Adult £4. Booking essential Rangers 01473 433994

**Saturday 8th May 2pm FOHP Stableblock, Holywells Park WILDFLOWER & WILDLIFE WALK**

Explore Holywells Park and find out about its wildlife, flowers, history and ongoing evolution. Small donation appreciated. Details from Peter Scotcher 01473 463860

**Sunday 9th May 2pm – 4:30pm FOHP Stableblock Holywells Park APPLE BLOSSOM & SCARECROW'S TEA PARTY**

Enjoy apple blossom, tea and homemade cakes and make a scarecrow in the Holywells Park Orchard. Marvel at an Orchard full of scarecrows of different styles and dress. We'll supply the scarecrow frames and stuffing. Please bring old clothes for your scarecrow, which you may take or leave at the end. Donations. Details from Peter Scotcher 01473 463860

**Saturday 15th May 9am RSPB Upper Hollesley Common FIELD MEETING: Heathland and woodland birds**

Meet at Upper Hollesley Common car park at 09.00hrs. 4hrs. 4-5miles. TM471334. Details from Stephen Marginson 01473 258791

**Saturday 15th May 10am - Noon PWCG Martlesham Heath WORK PARTY**

Come along and lend a hand at today's Portal Woodlands Conservation Group work party in the woodland. Meet opposite the Police sports field entrance in Portal Avenue. Details from Duncan Sweeting 01473 612632

**Saturday 15th May 10:30am SWT Broaks Wood, Halstead GUIDED WALK**

Broaks Wood is a Forestry Commission site, covering 62 acres, with beautiful walks and a vast range of habitats. Most of it is Ancient Woodland, probably existing as woodland since the end of the last ice-age 12,000 years ago. It therefore has a rich flora and fauna, including 200 species of wild flowers and 25 species of butterflies. Our guide is Simon Leatherdale. Broaks Wood is 3 miles NW of Halstead on the A1017. Grid Ref, TL 784 316. Donation £3 for SWT and Tree Aid. No need to book. Details from Pam Ireland 01473 723179

**Sunday 16th May 10am – 1pm MCG Martlesham BIRD SURVEY**

On Sunday 16th May Martlesham Conservation group will be undertaking a bird survey by walking round our woodland on the heath looking and listening for the birds present. We may even hear a Nightingale. Please come along and bring a pair of binoculars if you have them. No expertise is necessary as there will be others there to guide you. Please meet outside the Douglas Bader at 10am. Details from Phil Smith 01473 625630

**Sunday 16th May 10:30am IWG & FoBBP Spring Wood WORK PARTY**

Join Ipswich Wildlife Group and the Friends of Belstead Brook Park as we edge paths, clear bramble and ready the wood for the Summer. Meet at the stepped entrance to the wood. Details from Ray Sidaway on 01473 259104

**Tuesday 18th May 10am RSPB Pipers Vale BIRDING WALK**

This walk is hosted by the Ipswich group of the RSPB and starts at the car park at the vale entrance. TM178419. It is free for RSPB members. Details from Kathy Reynolds 01473 714839

**Wednesday 19th May 6:30pm RSPB Westhorpe FIELD MEETING**

Visit to Lodge Farm, High Stewardship country farm at Westhorpe. three hour tour by foot and trailer to visit the key wildlife areas on the farm. Meet at Lodge Farm Westhorpe Nr Stowmarket IP14 4TA. TM703040. Details from Stephen Marginson 01473 258791

**Saturday 22nd May PWCG Martlesham NATURE WATCH CLUB**

Nature Watch is a club mainly for 5-11 year olds, to come into the woods with their parents or guardians to enjoy organized nature projects, develop conservation skills and work towards awards under the RSPB Explorer Award Scheme. To find out more details and book a place for 2010, please send an email to [naturewatch.pwcg@martlesham.org.uk](mailto:naturewatch.pwcg@martlesham.org.uk). Details from Duncan Sweeting 01473 612632

**Saturday 29th May 10am – noon IBC Rangers Christchurch Park WALK WITH TREES**

Walk in the Woods is the Tree Council's month-long festival to encourage everyone to enjoy trees and woods in spring. Join the Rangers on a walk and learn how to identify some of our most common native and non-native species. Meet at the Reg Driver Visitor Centre, Christchurch Park. Child £2/Adult £4. Booking essential Rangers 01473 433994

**Monday 31st May 10:30am – noon IBC Rangers BE NICE TO NETTLES**

To many the nettle is a troublesome weed that should be eradicated. This view has only recently developed; the humble nettle has played an important role in the natural world. See the nettle in a whole new light and if you're brave enough try some fresh nettle tea. Child £2/Adult £4. Booking essential Rangers 01473 433994

**Saturday 5th June 10am SWT Sizewell GUIDED WALK led by Carl Powell**

Cared for by the SWT for British Energy these lovely grazing marshes, in June, will be a carpet of wild flowers, many of them orchids. There are many species of dragonflies and damselflies, many birds including warblers, kingfishers and barn owls may be seen, while otters and water vole inhabit the area. Carl's walk will last for about 2½ hours, and stout shoes or boots are advisable. The site is about 1 km NNE of Leiston (Grid Ref 454 638). We shall meet in the car park there at 10.00am. Donation £3. No need to book. Details from Pam Ireland 01473 723179

**Saturday 12th June PWCG Martlesham NATURE WATCH CLUB**

Nature Watch is a club mainly for 5-11 year olds, to come into the woods with their parents or guardians to enjoy organized nature projects, develop conservation skills and work towards awards under the RSPB Explorer Award Scheme. To find out more details and book a place for 2010, please send an email to naturewatch.pwcg@martlesham.org.uk. Details from Duncan Sweeting 01473 612632

**Sunday 13th June 10am – 1pm MCG Martlesham WORK PARTY**

Join the Martlesham Conservation Group on Martlesham Heath SSSI today for their regular work party. Meet at the Douglas Bader pub. Details from Phil Smith 01473 625630

**Tuesday 15th June 10am RSPB Christchurch Park BIRDING WALK**

This walk is hosted by the Ipswich group of the RSPB and starts at the Soane St entrance Christchurch Park - Grid Ref TM165448. It is free for RSPB members. Details from Kathy Reynolds 01473 714839

**Mid June RSPB Tunstall Heath NIGHTJAR WALK**

Evening dependant on weather. Details from Stephen Marginson smarginson@btinternet.com or 01473 258791

**Wednesday 16th June 12:30pm – 1:15pm IBC Rangers Pipers Vale WILDLIFE WALK**

Visit part of the Orwell Country Park to enjoy the heathland and grassland habitats along with their butterflies, birds and wildflowers. Booking essential Rangers 01473 433994

**Thursday 17th June 7pm – 9:30pm IBC Rangers River Orwell SUMMER WILDLIFE CRUISE**

A relaxing evening cruising the Orwell Estuary within the Suffolk Coast and Heaths Area of Outstanding Natural Beauty. Watch the amazing wildlife that lives on this internationally important river. Bring along your binoculars! Please telephone for further information and ticket prices. Booking essential Rangers 01473 433994

**Sunday 20th June 10am - Noon PWCG Martlesham Heath WORK PARTY**

Come along and lend a hand at today's Portal Woodlands Conservation Group work party in the woodland. Meet opposite the Police sports field entrance in Portal Avenue. Details from Duncan Sweeting 01473 612632

**Sunday 20th June 10:30am IWG & FoBBP Spring Wood WORK PARTY**

Join Ipswich Wildlife Group and the Friends of Belstead Brook Park as we pull bracken and clear bramble in the wood. Meet at the stepped entrance to the wood. Details from Ray Sidaway on 01473 259104

**Friday 25th June 9:15pm PWCG Martlesham GLOW WORM WALK & SURVEY**

Join us for a walk to find these fascinating creatures aglow in the night. Meet by the Control Tower in The Grove. Details from Duncan Sweeting 01473 612632

**Saturday 26th June 1pm – 2:30pm IBC Rangers Orwell Country Park BUTTERFLY BALL**

In National Insect Week come and see probably the most beautiful flying insects in the world. Watch them dance from plant to plant learning about their life cycles and how us humans can help protect these delicate insects. Child £2/Adult £4. Booking essential Rangers 01473 433994

**Saturday 10th July 11am – 2pm FOHP Stableblock Holywells Park BUG HUNT**

Search for bugs and invertebrates (maybe larger animals such as frogs and toads too!) in the hay meadows, woodlands and orchard of Holywells Park. Light refreshments. Donations. Details from Peter Scotcher 01473 463860

**Sunday 11th July 8:30am SWT London COACH OUTING to the Natural History Museum and Chelsea Physic Garden**

Morning spent in the Natural History Museum where the new Darwin Centre Extension has recently opened, and afternoon at the Chelsea Physic Garden where we shall have a guided tour to see medicinal and rare plants. See details and booking form in the SWT section of this Newsletter. Meet Crown Street Lay-by. Cost approx £27. Booking essential Pam Ireland 01473 723179

**Sunday 11th July 10am – 1pm MCG Martlesham WORK PARTY**

Join the Martlesham Conservation Group on Martlesham Heath SSSI today for their regular work party. Meet at the Douglas Bader pub. Details from Phil Smith 01473 625630

**Saturday 17th July 10am - Noon PWCG Martlesham Heath WORK PARTY**

Come along and lend a hand at today's Portal Woodlands Conservation Group work party in the woodland. Meet opposite the Police sports field entrance in Portal Avenue. Details from Duncan Sweeting 01473 612632

**Sunday 18th July 10:30am IWG & FoBBP Spring Wood WORK PARTY**

Join Ipswich Wildlife Group and the Friends of Belstead Brook Park as we pull bracken and clear bramble in the wood today. Meet at the stepped entrance to the wood. Details from Ray Sidaway on 01473 259104

**Wednesday 21st July 12:30pm – 1:15pm Greenways River Gipping WILDLIFE WALK**

Discover your River Butterflies and crickets in the long grass - Explore the amazing range of wildlife along the river. The Great Green Bush-Cricket needs to be seen and heard to be believed! Details from Peter Scotcher 01473 433995

**Saturday 24th July PWCG Martlesham NATURE WATCH CLUB**

Nature Watch is a club mainly for 5-11 year olds, to come into the woods with their parents or guardians to enjoy organized nature projects, develop conservation skills and work towards awards under the RSPB Explorer Award Scheme. To find out more details and book a place for 2010, please send an email to naturewatch.pwcg@martlesham.org.uk. Details from Duncan Sweeting 01473 612632

**Saturday 24th July Noon – 2pm IBC Rangers Holywells Park POND DIPPING**

Join the Rangers for an afternoon of fun pond dipping in Holywells Park. Search for bugs and creepy crawlies using nets and other devices. What can we find in the pond using our new underwater camera? Child £2/Adult £4. Booking essential Rangers 01473 433994

**Sunday 25th July 2pm Greenways Project & 'Wild about Westgate' BUG HUNT**

Come and see Britain's biggest bush-cricket and plenty of other insects too in a wildflower meadow next to the River Gipping. Insect-related activities for children. Ring to book by morning. Details from Peter Scotcher 01473 433995

**Wednesday 28th July 11am – 12:30pm IBC Rangers Orwell Country Park BASK IN THE PARK**

A totally amazing opportunity to get unusually close to native and exotic lizards, snakes and insects. Come and learn about these elusive creatures and then take a walk through the Country Park seeking out our native reptiles and amphibians. Child £2/Adult £4. Booking essential Rangers 01473 433994

**Wednesday 28th July 8:30pm IBC Rangers Orwell Country Park MOTH NIGHT**

Moths have always played second fiddle to their diurnal cousins. The study of moths is growing in popularity in the UK. We will be setting traps and making sugar ropes for the second year to attract these nocturnal flying insects to build our knowledge of these creatures. Child £2/Adult £4. Booking essential Rangers 01473 433994

**Sunday 1st August 11am – 4pm Greenways Project River Gipping A RIVER FOR ALL**

Come and enjoy a wide range of activities for all the family on the banks of the river. We're hoping to offer boat trips, canoeing trials, cycling and opportunities to find out about the river and its history and wildlife. For location and further details please ring or watch local press. Details from Peter Scotcher 01473 433995

**Wednesday 4th August 10:30am – noon IBC Rangers Orwell Country Park MUDDY GOOD FUN**

Discover what lives beneath the black ooze of the Orwell estuary and why so many birds visit it. Be prepared to get muddy as we dig through the ooze looking for the creatures. Don't forget to bring your wellies. Child £2/Adult £4. Booking essential Rangers 01473 433994

**Thursday 5th August 0pm – 3pm IBC Rangers Chantry Park MINI-BEAST SAFARI**

Children go on a minibeast safari, collecting minibests and playing minibeast games. They learn to examine the animals and use magnifying pots. Meet in front of the Mansion (Hadleigh Rd Entrance) in Chantry Park. Child £2/Adult £4. Booking essential Rangers 01473 433994

**Saturday 7th August 2:30pm SWT Rede Hall Farm VISIT TO SUFFOLK HORSE CENTRE with Nigel Oakley**

This is a great opportunity to visit Rede Hall Farm where Nigel (who spoke to the Ipswich SWT group in December) keeps his Suffolk Punches. There may be a chance to see them in harness and pulling a plough and hopefully there will be a foal (due at the end of February). Rede Hall Farm is situated on the A 143, about 8 miles SW of Bury St Edmunds. Follow the signs to Ickworth and keep straight on. Grid Ref. TL 804 576. No need to book. Donation £3. Details from Pam Ireland 01473 723179

**Sunday 8th August 10am – 1pm MCG Martlesham WORK PARTY**

Join the Martlesham Conservation Group on Martlesham Heath SSSI today for their regular work party. Meet at the Douglas Bader pub. Details from Phil Smith 01473 625630

**Sunday 8th August 10am – Noon RSPB Melton BIRDING WALK**

River Deben, Melton to Woodbridge for migrant waders and other birds. Meet at Melton Riverside car park at 10.00hrs. 2hrs. 2miles. TM503287. Details from Stephen Marginson 01473 258791

**Wednesday 11th August 1pm – 3pm IBC Rangers Christchurch Park NATURE DETECTIVES**

Learn more about wildlife. Join the Rangers and explore the secret life of mini-beasts, scavenge like a squirrel and look for other exciting wildlife. Meet at Reg Driver Centre, Christchurch Park. Child £2/Adult £4. Booking essential Rangers 01473 433994

**Thursday 12th August 1pm – 3pm IBC Rangers Stonelodge Park ART IN THE PARK**

Join the Rangers for an afternoon of art in the park. Design your own animals and pictures. Use your imagination to create your favourite animal from various materials. Child £2/Adult £4. Booking essential Rangers 01473 433994

**Sunday 15th August 10:30am IWG & FoBBP Spring Wood WORK PARTY**

Join Ipswich Wildlife Group and the Friends of Belstead Brook Park as we pull bracken and clear bramble in the wood today. Meet at the stepped entrance to the wood. Details from Ray Sidaway on 01473 259104

**Wednesday 18th August 11am – 12:30pm IBC Rangers Orwell Country Park TEDDY BEAR BUG HUNT**

Become detectives of the natural world and discover the micro world of the mini-beast. We will be looking under logs and leaves, in bushes and trees to learn about these fascinating animals. Bring along teddy to share a picnic when all the hard work is done. Child £2/Adult £4. Booking essential Rangers 01473 433994

**Wednesday 18th August 12:30pm – 1:15pm Greenways Bourne Park & Bobbits Lane WILDLIFE WALK**

See the extensive wetland habitats of the Belstead Brook - south-Suffolk's largest reedbed and the recently re-worked wet meadows. Also see barn owl boxes in both sites as part of a project to encourage the owls back to Ipswich. Details from James Baker 01473 433995

**Thursday 19th August 1pm – 3pm IBC Rangers Christchurch Park BUILD A BUGALOW**

Using natural materials, build homes for the insects that need somewhere to sleep over the winter. Meet at the Reg Driver Visitor Centre, Christchurch Park. Child £2/Adult £4. Booking essential Rangers 01473 433994

**Wednesday 25th August 8pm – 10pm IBC Rangers Christchurch Park BATS IN THE PARK**

Learn about British Bats, how to identify them and where best to find them. The Rangers will take you on a guided walk around the Park. Long sleeves and insect repellent are advisable if you're prone to being bitten by midges! Meet outside the Reg Driver Centre, Christchurch Park. Child £2/Adult £4. Booking essential Rangers 01473 433994

**Thursday 26th August 8pm – 9:30pm IBC Rangers Holywells Park PARK IN THE DARK**

Join the Rangers for an evening of entertainment in Holywells Park. Learn all there is to know about bats and moths whilst experiencing the atmosphere of the 'Park in the dark'. Child £2/Adult £4. Booking essential Rangers 01473 433994

**Saturday 4th September PWCG Martlesham NATURE WATCH CLUB**

Nature Watch is a club mainly for 5-11 year olds, to come into the woods with their parents or guardians to enjoy organized nature projects, develop conservation skills and work towards awards under the RSPB Explorer Award Scheme. To find out more details and book a place please email to naturewatch.pwcg@martlesham.org.uk. Details from Duncan Sweeting 01473 612632

**Sunday 12th September 10am – 1pm MCG Martlesham WORK PARTY**

Join the Martlesham Conservation Group on Martlesham Heath SSSI today for their regular work party. Meet at the Douglas Bader pub. Details from Phil Smith 01473 625630

**Wednesday 16th September 7:30pm SWT Bolton Lane TALK: THE DUNWICH FOREST PROJECT**

This illustrated talk by Dayne West, is hosted by the Ipswich group of the Suffolk Wildlife Trust at St. Margaret's School Hall in Bolton Lane Admission £2. Details from Dave Munday 01473 217310

**Saturday 18th September 10am - Noon PWCG Martlesham Heath WORK PARTY**

Come along and lend a hand at today's Portal Woodlands Conservation Group work party in the woodland. Meet opposite the Police sports field entrance in Portal Avenue. Details from Duncan Sweeting 01473 612632

**Sunday 19th September 10:30am IWG & FoBBP Spring Wood WORK PARTY**

Join Ipswich Wildlife Group and the Friends of Belstead Brook Park as we pull bracken and clear bramble in the wood today. Meet at the stepped entrance to the wood. Details from Ray Sidaway on 01473 259104

# Regular Events

**TUESDAYS 9.30am Greenways CONSERVATION WORK PARTY**

Meet at the Stable Block Holywells Park to visit one of over 40 sites around Ipswich for a day's practical task. Contact 01473 433995

**THURSDAYS 9.30am Greenways CONSERVATION WORK PARTY**

Meet at the Stable Block Holywells Park for a day's practical tasks along the banks of the River Gipping. Contact Peter Scotcher 07736 826054

**MOST FRIDAYS 9.30am Greenways CONSERVATION WORK PARTY**

As well as Tuesdays, the Greenways Project, has a smaller but just as welcoming group of volunteers most Fridays. Meet at the Stable Block, Holywells Park from where we travel to one of our sites around Ipswich for a day's practical task. Contact 01473 433995

**MOST SATURDAYS 10.30am - 1pm IWG Northgate Allotments WOODCRAFT & WILDLIFE**

Get involved in coppicing and woodland skills at the Wildlife area. Call Geoff Sinclair to confirm dates 01473 327720

**SECOND THURSDAY OF THE MONTH 8pm 'Green Drinks' Dove Inn, Ipswich DRINKS AND CHAT**

Join us at the Dove Inn for a drink, a chat and a bit of networking with other environmentally-minded people. Look out for the 'Green Drinks' sign on the table. All welcome. Details from Steve Prichard on 07724 004272